

ARCHITECT:  
**CALDERFLOWER**  
architecture

CALDER FLOWER ARCHITECTS PTY LTD • ABN 66 001 900 278 • NOMINATED ARCHITECT: L CALDER 9655  
Level 2 - 140 Myrtle St Chippendale NSW 2008 • T (02) 9698 9822 • www.calderflower.com.au

CLIENT:  
**fresh hope**  
care  
FRESH HOPE CARE

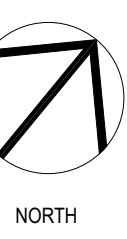
RESPONSE TO COUNCIL RFI'S  
**icon**  
project management  
Icon Project Management  
10/350 KENT STREET SYDNEY NSW 2000

DRAWING REVISIONS				RESPONSE TO COUNCIL RFI'S			
REV	DATE	DESCRIPTION	ISSUE	DATE	DESCRIPTION	ISSUE	DATE

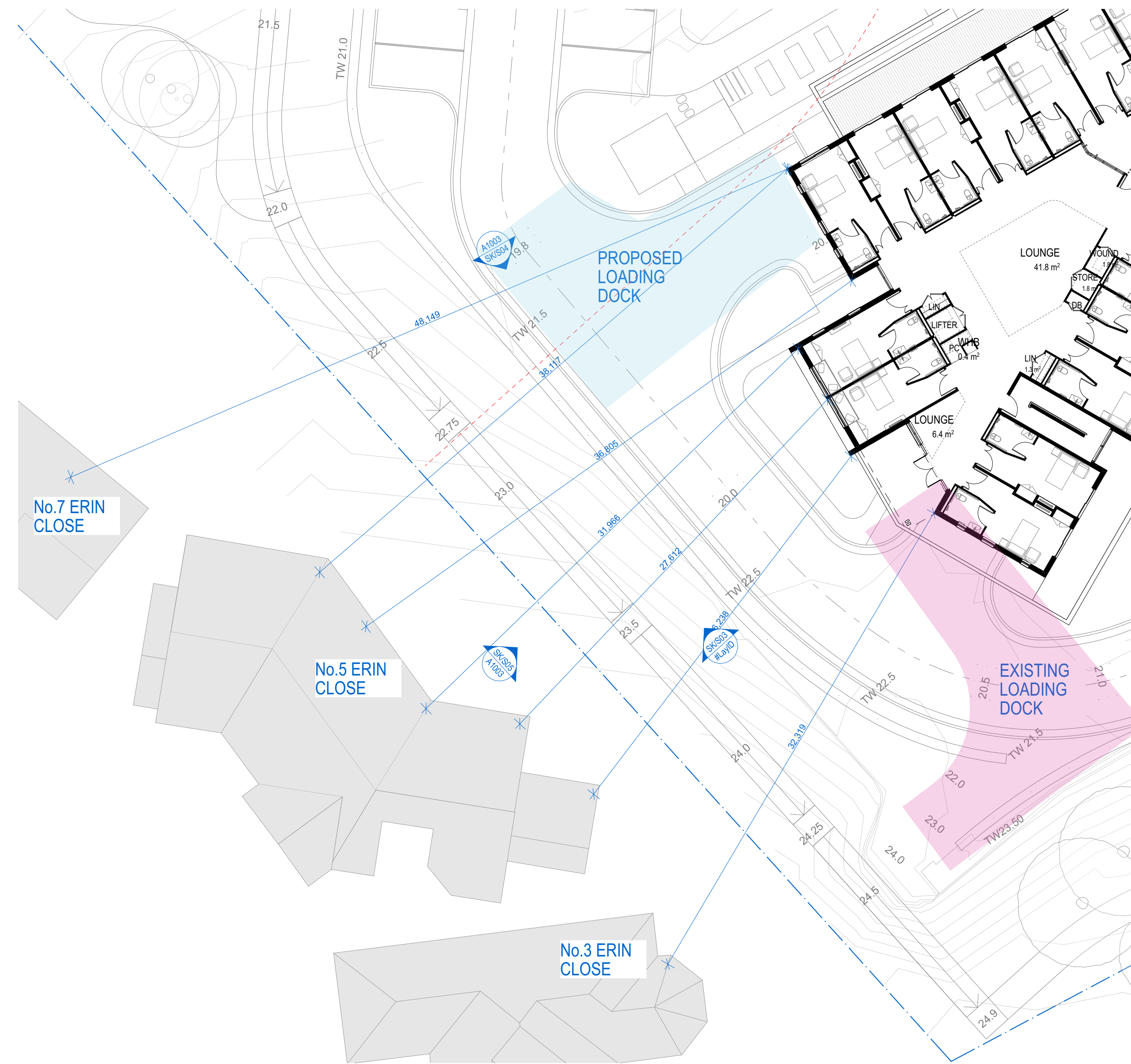
GENERAL NOTES:  
• DO NOT SCALE FROM DRAWINGS. USE FIGURED DIMENSIONS ONLY.  
• ANY DISCREPANCIES IN DOCUMENTATION-CONTACT THE ARCHITECT FOR CLARIFICATION.  
• CALDER FLOWER ARCHITECTS ARE NOT LIABLE FOR ANY LOSS-DAMAGE-CLAIM-COST DEMAND AS A RESULT OF THE USE OR RECEIPT OF DRAWINGS ISSUED IN DWG FORMAT.  
• THIS DRAWING IS NOT AN APPROVED CC DRAWING.  
• PRIOR TO USE FOR BUILDING CONSTRUCTION THE BUILDER MUST ENSURE THEY ARE IN POSSESSION OF A CC AND ALL OTHER REQUIRED COUNCIL APPROVALS

PROJECT:  
**FHC MAITLAND**  
7 Martin Close & 42 Stronach Ave East Maitland,  
NSW 2323  
DRAWING TITLE:  
**PRIVACY ANALYSIS No. 44 STRONACH AVE**

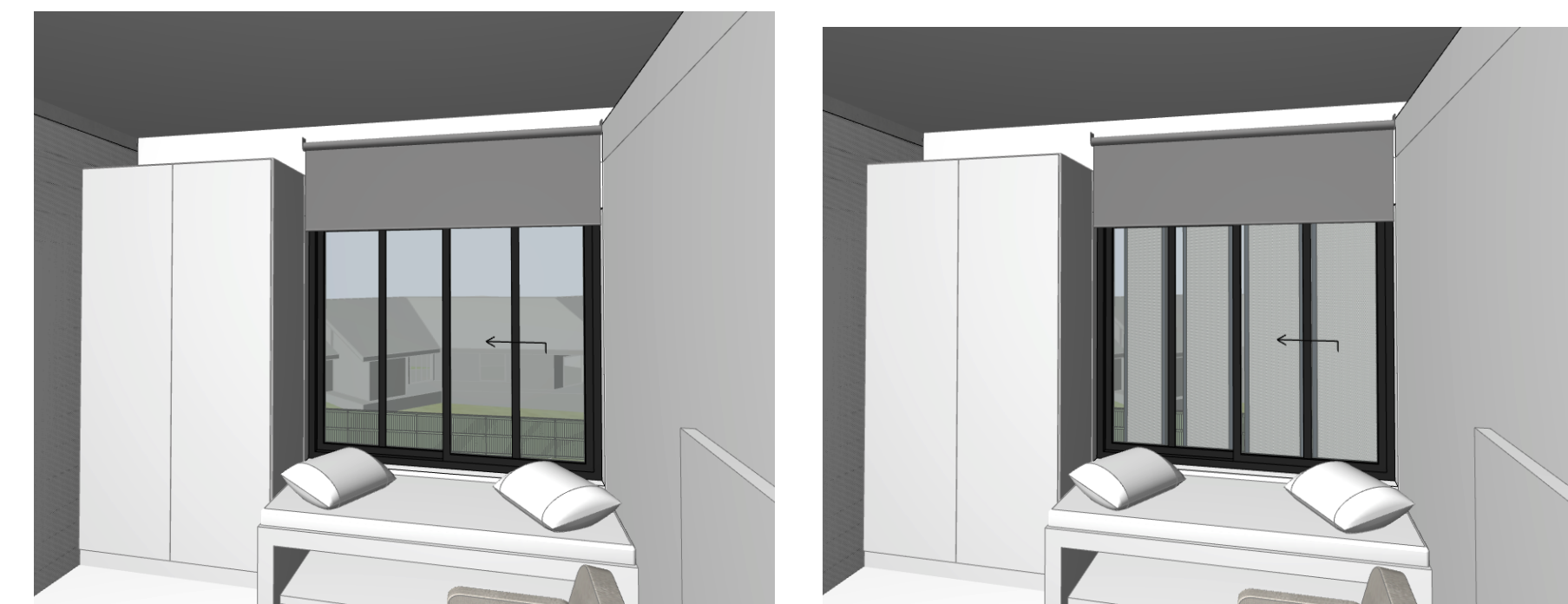
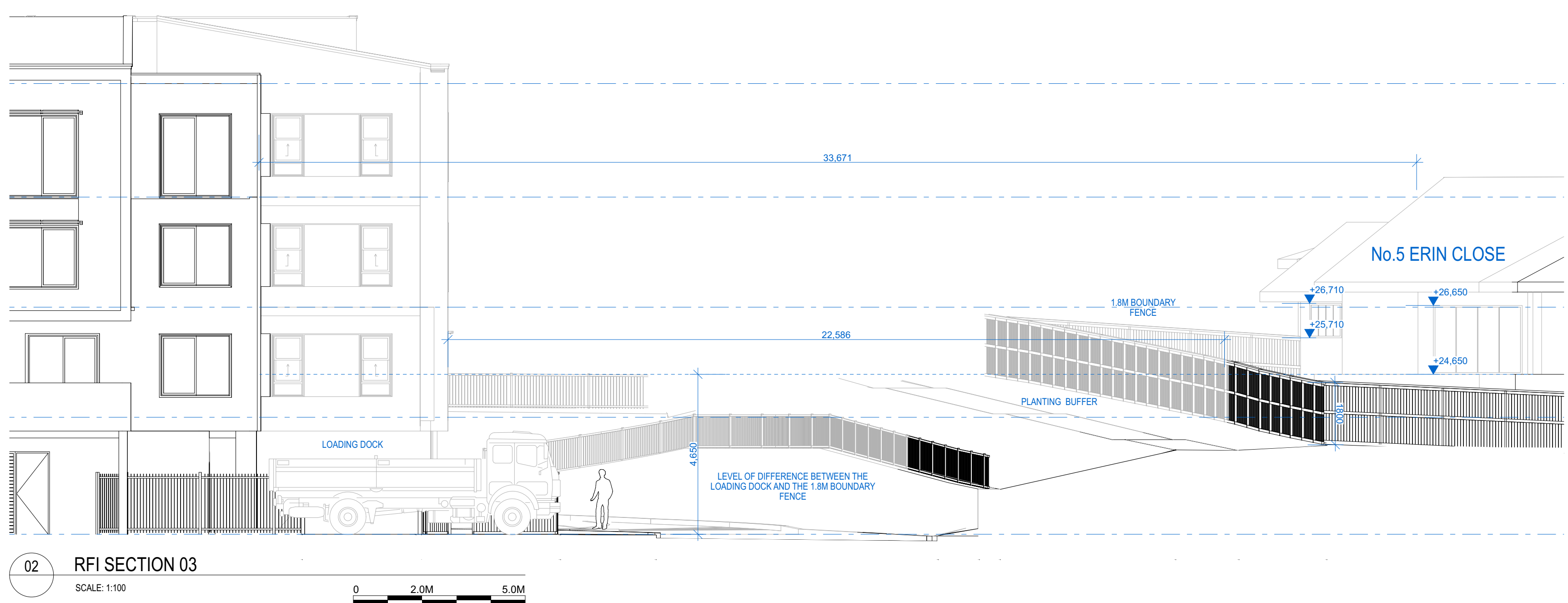
SCALE: 1:100  
PROJECT NO. 19160  
DATE: 04/09/2020  
PROJECT STATUS: DEVELOPMENT APPLICATION  
ORIGINAL PAPER SIZE: A1  
PROJECT STATUS: DRAWING NO. ISSUE  
DA A1002 A







01 PRIVACY TO ERIN CLOSE HOUSES  
SCALE: 1:200



ARCHITECT:  
**CALDERFLOWER**  
architecture  
CALDER FLOWER ARCHITECTS PTY LTD • ABN 66 001 900 278 • NOMINATED ARCHITECT: L CALDER 6955  
Level 2 - 140 Myrtle St Chippendale NSW 2008 • T (02) 9698 9822 • www.calderflower.com.au

CLIENT:  
**fresh hope care**  
FRESH HOPE CARE

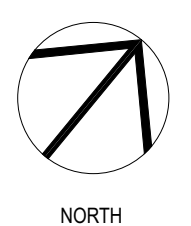
RESPONSE TO COUNCIL RFI'S  
**icon**  
project management  
Icon Project Management  
10/350 KENT STREET SYDNEY NSW 2000

DRAWING REVISIONS	REV	DATE	DESCRIPTION	ISSUE	CFA	LC
	4/9/20		RESPONSE TO COUNCIL RFI'S	A	CFA	LC

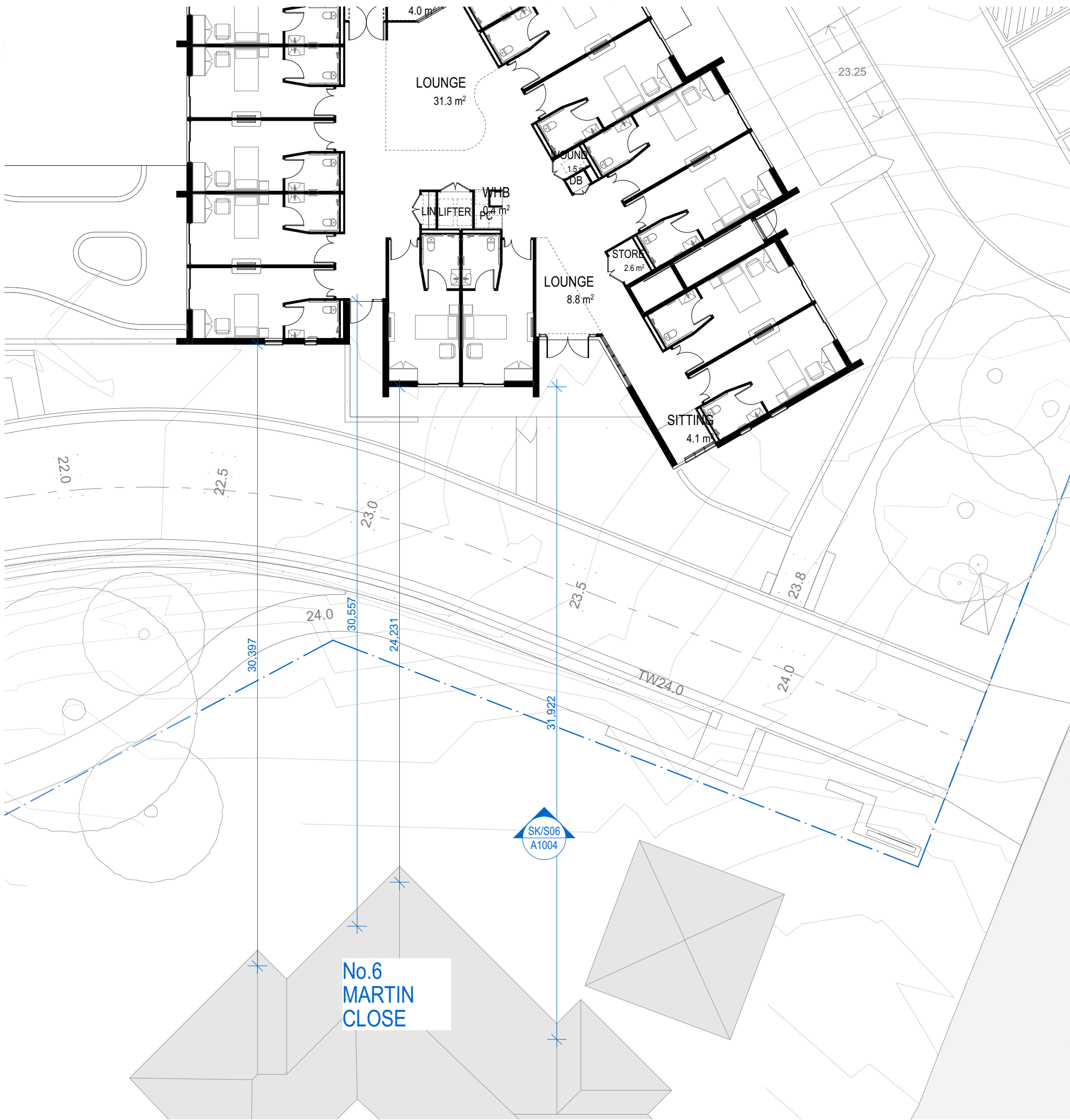
GENERAL NOTES:  
• DO NOT SCALE FROM DRAWINGS. USE FIGURED DIMENSIONS ONLY.  
• ANY DISCREPANCIES IN DOCUMENTATION-CONTACT THE ARCHITECT FOR CLARIFICATION.  
• CALDER FLOWER ARCHITECTS ARE NOT LIABLE FOR ANY LOSS-DAMAGE-CLAIM-COST DEMAND AS A RESULT OF THE USE OR RECEIPT OF DRAWINGS ISSUED IN DWG FORMAT.  
• THIS DRAWING IS NOT AN APPROVED CC DRAWING.  
• PRIOR TO USE FOR BUILDING CONSTRUCTION THE BUILDER MUST ENSURE THEY ARE IN POSSESSION OF A CC AND ALL OTHER REQUIRED COUNCIL APPROVALS

PROJECT:  
**FHC MAITLAND**  
7 Martin Close & 42 Stronach Ave East Maitland,  
NSW 2323  
DRAWING TITLE:  
**PRIVACY ANALYSIS FOR ERIN CLOSE HOUSES**

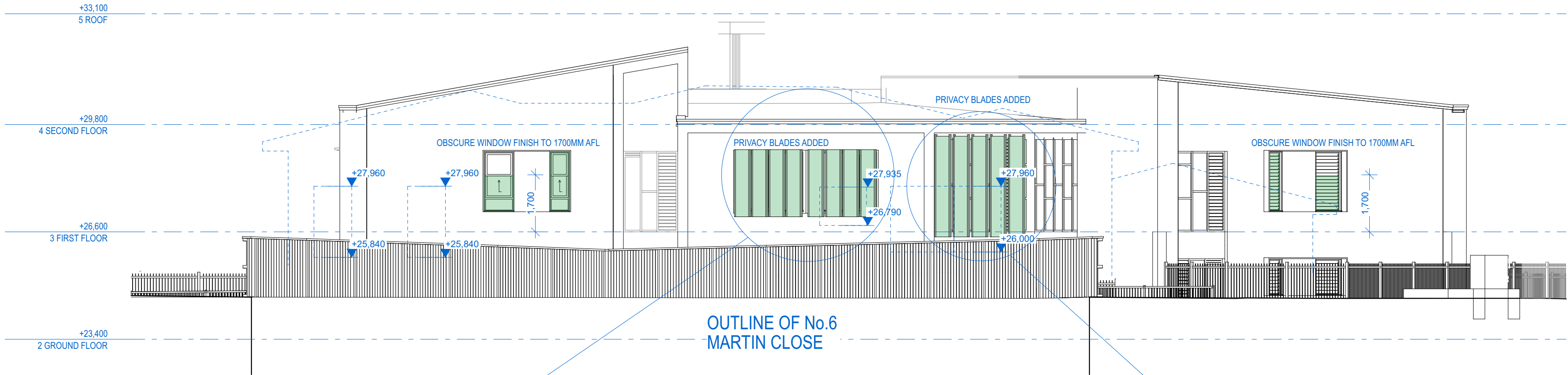
SCALE: 1:100  
PROJECT NO. 19160  
DATE: 04/09/2020  
PROJECT STATUS: DEVELOPMENT APPLICATION  
ORIGINAL PAPER SIZE: A1  
PROJECT STATUS: DRAWING NO. ISSUE  
DA A1003 A







01 PRIVACY TO NO. 6 MARTIN CLOSE  
SCALE: 1:200



02 RFI SECTION 05  
SCALE: 1:100



DRAWING REVISIONS	REV	DATE
		4/9/20

DATE	DESCRIPTION	A	CFA	LC
4/9/20	RESPONSE TO COUNCIL RFI'S			

GENERAL NOTES:

- DO NOT SCALE FROM DRAWINGS. USE FIGURED DIMENSIONS ONLY.
- ANY DISCREPANCIES IN DOCUMENTATION-CONTACT THE ARCHITECT FOR CLARIFICATION.
- CALDER FLOWER ARCHITECTS ARE NOT LIABLE FOR ANY LOSS-DAMAGE-CLAIM-COST DEMAND AS A RESULT OF THE USE OR RECEIPT OF DRAWINGS ISSUED IN DWG FORMAT.
- THIS DRAWING IS NOT AN APPROVED CC DRAWING.
- PRIOR TO USE FOR BUILDING CONSTRUCTION THE BUILDER MUST ENSURE THEY ARE IN POSSESSION OF A CC AND ALL OTHER REQUIRED COUNCIL APPROVALS

